



MINERVA SCHOOL

NEWSLETTER

Learning for Life

Eton Street SUTHERLAND NSW 2232 Telephone: 9521 3433 Fax: 9545 3316 E-mail: minerva-s.school@det.nsw.edu.au
WEBSITE: www.minerva-s.schools.nsw.edu.au

**DATES TO
REMEMBER
TERM I 2013**

**FEBRUARY
VACCINATIONS
YEAR 7 & 9**
Wednesday 27th

**MARCH
SPECIAL
ASSEMBLY—
PRESENTATION
OF SCHOOL
LEADERS**
Friday 1st March

**PUBLIC HOLIDAY
GOOD FRIDAY
AND EASTER
MONDAY**
Friday 27th March
Monday 1st April

**APRIL
STUDENTS
RETURN**
Tuesday 2nd

**LAST DAY OF
TERM I**
Thursday 11th

TERM 2 2013

**APRIL
STAFF
DEVELOPMENT
DAYS**
Monday 29th

**STUDENTS
RETURN**
Tuesday 30th

SENSORY GARDEN

The Engagement Team comprising of Tracey Gocher, Michelle Cooney, Carolyn Wemyss and Laura Gaunt have been successful in applying for a grant from the Teachers Mutual Bank to begin the overhaul of the existing Sensory Garden. The focus of the garden is educational, therapeutic and environmental. The aim is to provide a real life context for learning in which the theory and practice of growing, harvesting, preparing and sharing are interwoven. The students are already enjoying the “Taste” and “Sound” sections of the garden which have been completed using the grant and the team are actively searching for further grants to complete the next stages of the garden. The hope is that the Sensory Garden will reach it’s full potential and become an invaluable learning space for all of our students. See page 6 for more photos and the Concept Plan or come in to the office and see the Plan on full display.



PRINCIPAL'S MESSAGE

I would like to wish everyone a very warm welcome to the 2013 school year. A special welcome goes to our new students and families joining us this year; Allesandro Year 4, Matthew Year 12, David Year 4 and Warwick Year 7.

School Captains & SRC

The 2013 School Captains and Student Representative Council members, elected by their peers, were inducted into their respective positions at a special school assembly on Friday 1st March. Congratulations to James, Year 11 and Mason, Year 11, school captains for 2013. Congratulations also to the Student Representative Council for 2013; Daylan Year 5, Kristian, Year 9 and Jake, Year 11. I look forward to working with this year's team, led by Laura Gaunt and Michelle Cooney.

School Development Day Implementing the Australian curriculum

Over the next three years NSW schools will be implementing new syllabuses in all curriculum areas. To assist with teacher professional learning, the NSW Government has gazetted an additional school development day (pupil free) for 2013. At Minerva we will be taking this on the last day of this term, **Friday 12th April 2013** and working with other local schools and regional consultants. There will also be our regular school development day on **Monday 29th April**. That means the students last day for Term 1 will be **Thursday 11th April** and their first day for Term 2 will be **Tuesday 30th April**.

Maternity Leave

Michelle Cooney begins her maternity leave at the end of Term 1. Sarah Ellingham will be replacing Michelle for the remainder of the year. We wish Michelle and husband Dean all the very best for the upcoming birth of their baby.

Annual School Contribution Levies

Funds received from school levies are committed to purchasing educational resources for your child to support their learning programs each year. This year an Information Technology levy has been introduced to subsidise the costs of online program

licences; Reading Eggs, Spell-o-drome and Mathletics all of which can now be accessed from home. A number of payment options have been provided for your convenience. Please don't hesitate to contact me if you would like to discuss this further.

Late Arrival and Early Departure Procedures

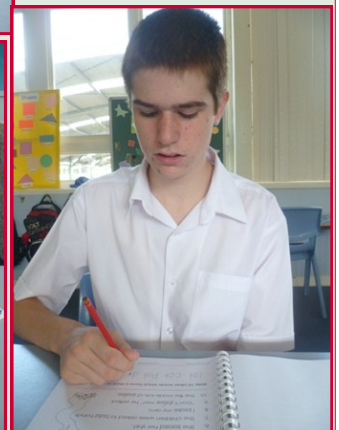
A reminder for all students, classes begin at 9am. Any student arriving after 9am **MUST** be accompanied to the school office and signed in by their parent or carer on each occasion. Any student leaving school prior to 2.45pm **MUST** be signed out at the office before departure. This is a legal requirement of the Department of Education and Communities School Attendance Policy. Any student who is consistently late without principal approval may be referred to the Home School Liaison Officer for follow up.

Kind regards,
Fiona Young
Principal



CLASS K

Some of the members of Class K in action .



CLASS A

Creative Writing and Art describing our holidays.



CLASS CS

Students in Class CS
Creating their
Communication Book
Covers



Class D

Students from Class D enjoying Surf Awareness at Cronulla Surf Club. Along with their peers from Class A, they have been practising their freestyle, back scull and dolphin dives. They have also been learning to use the paddle boards in calm and rough water. Well Done Class D!



Class L

Trying very hard during work rotations.

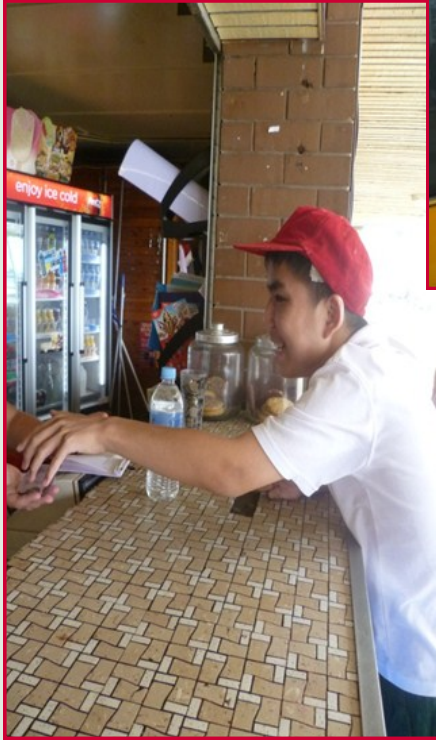


Class M

The Class M boys have enjoyed creating Aboriginal dot paintings

Class CW

As part of our community access program Class CW are going to Cronulla each Friday to walk along the esplanade and to buy their lunch at Dunningham Park.



MINERVA P & C EASTER HOT CROSS BUN FUNDRAISER

Don't forget to help support our school by purchasing some hot cross buns. Order forms have been sent home with your child or you can ring the office for more. Send in your orders to school with the correct payment in cash by Monday 18th March and they will be ready on Wednesday 27th March for collection from the office after 1.00pm or sent home with your child.

SPECIAL OFFER
TICKETS ONLY \$15 - SAVE 40%

2pm Sunday 24th February
1pm Sunday 2nd March
7.30pm Sunday 22nd March

Doors open 1hr prior to game

Crown Kingdome - Sydney Entertainment Centre
Tickets available from the Venue Box Office or ring Ticketmaster on 1300 883 622
or visit the website at www.ticketmaster.com.au

WHEN BOOKING QUOTE CODE: KINGS2WIN

SENSORY GARDEN



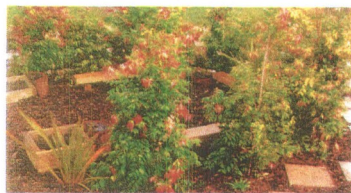
MINERVA INTERACTIVE SENSORY GARDEN CONCEPT PLAN

Sensory Garden Improvements - Concept Plan

Minerva School, Sutherland



Network of sandstone stepping stones to encourage discovery of edible plants area



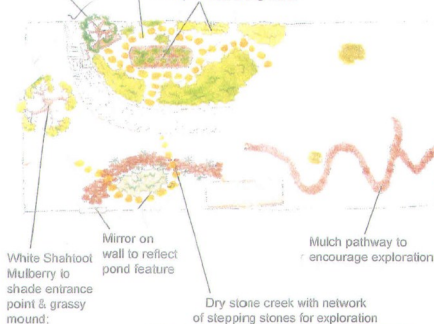
Spiral hedge of Lilly Pilly 'Cascade' with seating at centre



Raised timber walkway/seating for balancing or chilling out

Red Dwarf Mulberry for shade & fruit; with timber & sandstone seat underneath

New edible plants:
- Dianella
- Strawberries
- Midgeon berry
- Raspberries along fence



White Shahitool Mulberry to shade entrance point & grassy mound; spreading habit, non-staining fruit, grows to only 5-6m tall

Mirror on wall to reflect pond feature

Dry stone creek with network of stepping stones for exploration

Mulch pathway to encourage exploration

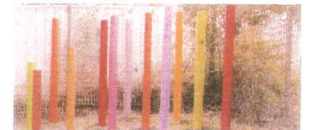
Candy cane tunnel of 5 arcs

Mural of landscape scene on wall

Chalkboard fixed to wall



Brightly painted timber poles for musical play



Giant toadstool seats



Edible Kids' Gardens
www.ediblekidsgardens.com.au

Plan not to scale

Mobile Phone Recycling Fundraiser

Dear Parents and Carers,



Just a reminder that we are still collecting any unwanted mobile phones (working or not) for recycling. For each phone collected the school receives \$3.00. Funds raised will be used to purchase specialised equipment and technology for our students.

Thank you to those who have already sent in their unwanted mobile phones. If you would like to collect mobile phones at your work place, please contact the office and we will help set you up.

Online Fundraising with Redflarez

Dear Parents and Carers,

A reminder to remember to look at the Redflarez website next time you need to shop. It doesn't cost any extra to shop online and there are many special offers. Every time you purchase something online from a retailer on the redflarez website, the retailer will donate money to our school.

Here's how you can help our school purchase more learning resources for our students.

1. Go to www.redflarez.com.au and sign up as a supporter
2. Search for the Minerva School Campaign page and click "Support Us"
3. Start shopping !

Here is a list of just some of the participating retailers :

Westfield

Apple iTunes

Rebel Sport

Clinique

Booktopia

Thrifty

Weight Watchers

Intercontinental Hotel Group

Accor Hotels Australia & NZ

Expedia

Ezibuy

Wanted Shoes

Zuji Australia

Marks & Spencer

Flowers for Everyone

Ferrero Roche Boutique

The Shire

Vintage & Collectables Fair



comojannalirotary.org

Saturday 9 March 2013

Sutherland Entertainment Centre | 9am - 4pm

Entry \$5 | CAFE LOUNGE | VALUATIONS | FORECOURT ENTERTAINMENT

QUESTIONS? | vintagefair@comojannalirotary.org | 8250 1605