



MINERVA SCHOOL

NEWSLETTER

Learning for Life

Eton Street SUTHERLAND NSW 2232 Telephone: 9521 3433 Fax: 9545 3316 E-mail: minerva-s.school@det.nsw.edu.au
WEBSITE: www.minerva-s.schools.nsw.edu.au

**DATES TO
REMEMBER
TERM 2 2014**

JUNE

**STUDENT
REPORTS GO
HOME
Thursday 26th**

**LAST DAY OF
TERM 2
Friday 27th**

TERM 3 2014

JULY

**FIRST DAY OF
TERM 3
FOR STAFF
AND
STUDENTS
Monday 14th**

ANNUAL MINERVA — ST PAT'S SOCCER MATCH

On Thursday 19th June, in glorious sunshine, Minerva senior students played a friendly soccer match against the St Patrick's Sutherland Yr 10 PE class.

The boys displayed World Cup fever with marvellous individual skills, prodigious team work and superb sportsmanship on display.

It was a marvellous spectacle and in a high scoring game Minerva won 10-9 with a late goal just before the final whistle. The whole team were great representatives for Minerva and engaged well with the visiting team.

Congratulations to all the boys for a great effort.



PRINCIPAL'S MESSAGE**WELCOME**

We welcome a new student, Cooper and his family to the Minerva Community.

Dear Parents/Carers

It has been my pleasure to support Minerva this term as Relieving Principal. I have had the opportunity to work with dedicated staff and wonderful students in what has been a busy but productive term.

Fiona has, however, made the decision to continue her leave for Term 3.

Unfortunately I am not in a position to continue at Minerva and Corinne Feldmann will take up the role of Relieving Principal in Term 3. Corinne brings with her extensive experience supporting students and schools and I am certain the school will benefit from her support.

Thank you to the Executive, staff, students and school community at Minerva.

NEITA AWARDS

Laura Faber has again been nominated for a National Excellence in Teaching Awards for Innovation. "Laura is not only a credit to Minerva School but an asset to the DEC. She is destined for bigger things."

Christine Damcevski, parent.

P&C

Farewell & thank you to Peter & Christine Damcevski for your wonderful enthusiasm and support given to many varied projects 2011-2014. On behalf of the Minerva community, we thank you both for your significant contribution.

TERM 3 RETURN

I wish all staff, students and families a restful break. We welcome students back to school on Monday 14th July.

Kind regards,

Cathy Wortley

Relieving Principal



Congratulations to Miss Sarah who has secured a further \$10000 from the Commonwealth Bank

Community Grants program to purchase interactive touch technology equipment for the Minerva School Sensory Room. A massive thank you to Commonwealth Bank Sutherland Branch for supporting us with this project.



Miss Sarah was also successful in securing \$5000 from the NRMA Community grants program which will go towards road safety tools, a bicycle and equipment to enable us to teach road safety and bicycle safety within our school playground

iPad ARRIVAL

"Thank you to the P & C for funding the purchase of our new iPads! The use of technology is an integral part of how our students learn. Staff are currently putting in place procedures and guidelines so that these exciting new tools can be utilized effectively. We look forward to having them ready for student use early next term." Thank you to our hard working P&C and our sponsors for the Trivia Night—Tynans Honda, Natasha Nagle from Belle Property, Qantas Credit Union, Southside Paediatric Dentistry, AVNET Technology Solutions, Le Cruiset, PKC Management Sutherland, Cronulla Sharks & Starshots Caringbah.



COMMONWEALTH BANK COMMUNITY GRANT PRESENTATION

At our school Assembly today we were presented with a cheque for \$10000. This was due to a successful grant application by Miss Sarah. We are very grateful to the staff of the Commonwealth Bank who donate from their salary to the Commonwealth Bank Staff Community Fund. Thank you staff from the Commonwealth Bank, we appreciate your generosity and support.





Class L have been learning about where our food comes from. Look at our wonderful 'Farm to Fridge' wall mural!

On Monday afternoons this term **Class C** have been joining in fun games in the hall with class L. Here are some action photos from our class



Here is **Class K** relaxing in front of the 'Machine' wall that they have created.



Class A experiencing a balance of academic work, fitness and creativity



Mason painting a self portrait

Conrade on comprehension.



Patrick shooting goals.



David enjoys using the sensory room



Class R boys enjoy bike riding



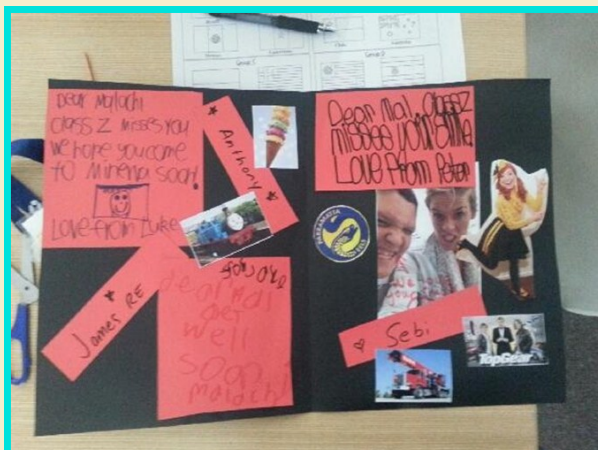
Warwick completes puzzles in the playground

Nicholas completes his fine motor tasks



CLASS Z at Miranda Westfield

Last week class Z went on their first community outing for the term to Miranda Westfield. It was a great success and both Sharon and myself were so happy with how the students went in a new environment. They each independently ordered and paid for their lunch. They showed fantastic manners when purchasing their train ticket and were confident in the busy and noisy environment of the shopping mall. This excursion will continue throughout the winter, and then we will be back in Cronulla by the beach in term 4.



We miss you Mall!

Our class sent a letter to Malachi who has been off school. We all hope he gets better soon and returns to school. We enjoyed finding all the things Mal loves on the computer to help create a get well card to be sent home to him.

Despite the lack of smiles **Class D** has been enjoying community access to Peace Park each Friday.



Luke B doing a fantastic job leading the school song at Friday's assembly.

Jamie's Garden Book - CLASS M

Class M are trying to fill their "Jamie's Garden Book" - a Woolworths Promotion. We are missing 39 stickers. If you have double ups of any of the following numbers could you please send them in via the school office. You will be donating to our Class healthy cause. Thank you from Class M Students.

The Missing Numbers Are:

6,12,15,16,17,20,21,24,26,29,32,35,36,43,36,43,45,46,48,52,54,56,60,63,70,71,72,76,77,78,83,88,95,97,98,107,108,110,114 & 122.

Thank you

Thank you also to Barbara Ward, mother of Mason for generously donating a "Jamie's Garden Greenhouse Kit" for each class. The students were very excited!



Parliamentary Award



Jake from Class D was the recipient of the 2013 Parliamentary Award. This was announced at our Annual School Presentation Day in December 2013. Jake was presented with his award at an official dinner hosted by Mr Lee Evans MP, Acting Speaker and Member for Heathcote at Parliament House on Wednesday 28th May 2014. Jake attended the dinner and presentation with his very proud parents. Congratulations Jake.



Class M have gone World Cup Crazy! In support of the FIFA World cup being held in Brazil, Class M have been learning about the history of the world cup. They have looked at the world cup mascot this year Fuleco and have designed their own flags as well as keeping up to date with the daily results on our world cup chart. Each student has been designated a group to look into and support, as well as cheering on Australia of course! Here is some of our world cup work.



MINERVA P&C ASSOCIATION: Term 2 update

The P&C is open to everyone, parents, carers, grandparents, teachers, students and members of the whole community. Recent research has shown that the vital ingredient for student learning potential is parental participation. Given the small size of this school, your P&C has achieved outstanding results. Please consider making a contribution towards maximising your child's learning outcomes by getting involved. We meet once a term in the Principal's office.

Here are some of the activities endorsed by Minerva P&C in Term 2 -:

- **Mothers Day Stall & Raffle**

Thank you to Deb Hunt and Barb Ward for organising another successful event. The gifts were spectacular and the children enjoyed what has become an annual Minerva tradition. Thank you to the families who contributed towards the raffle prizes, as there were 2 prizes per class. A special acknowledgement to Barb Ward for her wonderful contribution towards the raffle prizes. A combined profit of \$469.50 was raised.

- **Playground equipment**

Thank you to Deb Hunt who liaised with the SRC to provide the \$1000 funds to purchase lunchtime playground equipment to encourage positive play. This project was first endorsed by the P&C in November 2013 (Disco proceeds) and in 2014 (Easter Raffle proceeds) were later contributed towards this project. Thank you also to teachers Sarah and Michelle who collaborated with the SRC to organise a wish list.

- **Trampoline Mat**

Minerva P&C paid \$1200 to replace a damaged trampoline mat. This cost was covered by existing P&C funds. Thank you to Barb Ward who liaised with the school on this project.

- **Loftus Pies Fundraiser**

Thank you to Barb Ward and Deb Hunt for organising another successful Pie Drive. Especially suitable with the cold weather we are experiencing.

- **Sensory Garden Update**

A special thank you to Tracey Youssef and Minerva Staff for all your hard work on this complex project throughout this term. Assets Management are working with the school to complete the garden and cover unanticipated costs. Council approval has been given for the mural and musical instruments to be installed.

- **iPad Committee Update**

Minerva P&C wish the iPad committee the very best of luck and are delighted that this technology is being implemented this year. Thank you for inviting the P&C representative, Christine Damcevski, in the pre planning consultation process.

It was clear from the meeting that the Minerva staff are very excited and have been busy discussing the needs of all students, organisational models suited specifically to Minerva students, financial management and professional training considerations for staff.

Remember new faces and new ideas are most welcomed! Come along and make a difference, our children are worth it. Parental participation in the education process is the most important gift a child can receive.



Autism Community Network

**INFORMATION AND SUPPORT
FOR FAMILIES OF CHILDREN
WITH AUTISM**



ACN is a charity organisation for families with children on the autism spectrum.

We run parent / carer support groups as well as social groups to help children on the spectrum and their siblings make friends and improve their social skills.

Groups are available across various Sydney areas, and our regular newsletter and website provide updates on events and information to help families escape the isolation.

For more information please contact Steve on 0431 724 229 or via email below.

autismcommunity@yahoo.com

www.autismcommunity.org.au

Registered charity ABN 64 103 662 535

PILATES

FOR CARERS - 10.30AM THURSDAY

Are you a Carer who would like to try Pilates?



Benefits of Pilates:

- Stress relief through body awareness & breathing techniques.
- Create back support through abdominal, core based exercises.
- Stretches, strengthens & tones the whole body.

Please call Cheryl on 0417 417 217 as bookings are essential.

Cheryl is a Certified Pilates Instructor and Counsellor.

**SPECIAL FOR CARERS
ONLY \$10 PER CLASS**

Pilates classes are held at Carousel Counselling Services
13A Eton Street Sutherland

Ritchies Supermarket Community Benefit Program

Ritchies Supermarket at Taren Point run a Community Benefit Program whereby donations are made to a nominated School. Minerva School has been nominated by a few of their customers. So, spread the word to family and friends, to shop at Ritchies and get a community benefit card linked to our school. This is an easy way for family and friends to help support our school. Just use your card each time you shop at Ritchies and the store will donate to our School.



Royal Blinds & Carpets

"giving you the royal service"

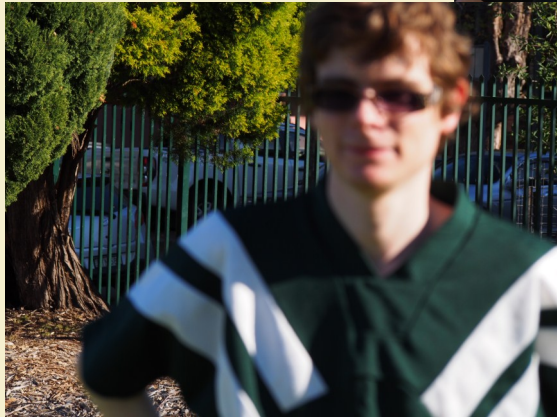
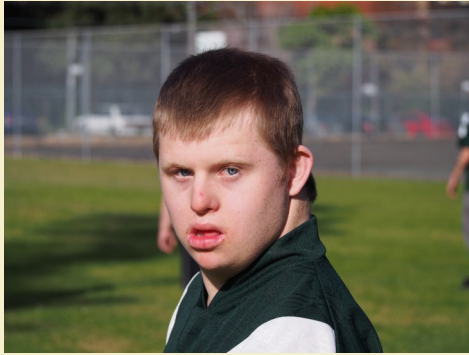


Jake

ABN: 5814 7009 345

M: 0450 111 900 P: 02 9681 2727

More Soccer photos



Sutherland Dyslexia Support Group



Sutherland Dyslexia Support Group is a forum where parents can talk, exchange ideas, information, resources and experiences with other parents.

The group keeps in contact via a Yahoo group, email, phone and meeting over coffee on the 4th Monday of the month at 10.30am at a café in Sutherland.

For further information or to join the support group contact

Paula Goulden on (02) 9528 4638 or email

psgoulden@tpg.com.au